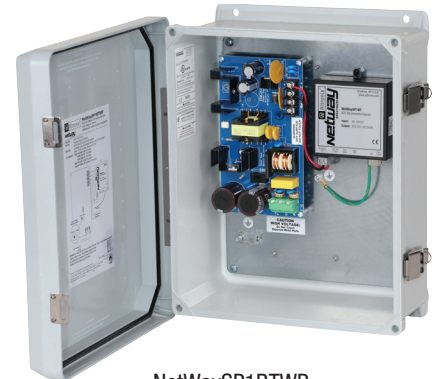


NetWaySP1BTWP

802.3bt Media Converter/Injector with Integral Power

Altronix NetWaySP1BTWP Outdoor 802.3bt media converter/injector provides a single 802.3bt (4PPoE) port up to 90W and accommodates Fiber (1000Base-X/SX/LX) or structured cable to transmit data. Units can be deployed with structured cable, conventional single/multimode fiber or composite cable (fiber + copper combined). Cameras/edge devices may be located up to 100m from the unit.



NetWaySP1BTWP

Specifications

Input

Power	115VAC, 60Hz, 2.5A or 230VAC, 50/60Hz, 1.3A
Input Fuse	5A/250V

Fiber Port

One (1) 1Gb SFP port

PoE Port

Single port rated up to 90W max.
IEEE 802.3af, 802.3at and 802.3bt compliant

Data Port

Connectivity: RJ45, auto-crossover
Wire type: 4-pair CAT5e
Distance: up to 100m
Speed: 10/100/1000 Mbps

Battery Charging

Type: Sealed lead acid or gel type
Failover: Upon AC loss, instantaneous
Batteries are sold separately
Separate ventilated enclosure is required

Features

Auto detection and protection of legacy non-PoE cameras/devices

Indicators (LED)

Yellow/Green RJ45 LEDs:	Yellow: 10/100 Green: 10/100/1000
Green PoE LED:	PoE present
Green SFP (Fiber) LED:	SFP connection

Agency Listings

CE European Conformity

Physical and Environmental

Dimensions (W x L x H)

Enclosure: 13.31" x 11.31" x 5.59" (338.1mm x 287.3mm x 142mm)
Shipping: 20.25" x 12.5" x 7.25" (514.4mm x 317.5mm x 184.2mm)
NEMA 4/4X, IP66-11 Rated enclosure for outdoor use

Weight (approx.)

Product: 10.5 lb. (4.76 kg)
Shipping: 11.9 lb. (5.4 kg)

Temperature

Operating: 60W: -40°C to 75°C (-40°F to 167°F)
80W: -40°C to 70°C (-40°F to 158°F)
90W: -40°C to 60°C (-40°F to 140°F)
Storage: -40°C to 85°C (-40°F to 185°F)

Relative Humidity: 85% +/- 5%

BTU/Hr. (approx.): 61 BTU/Hr.

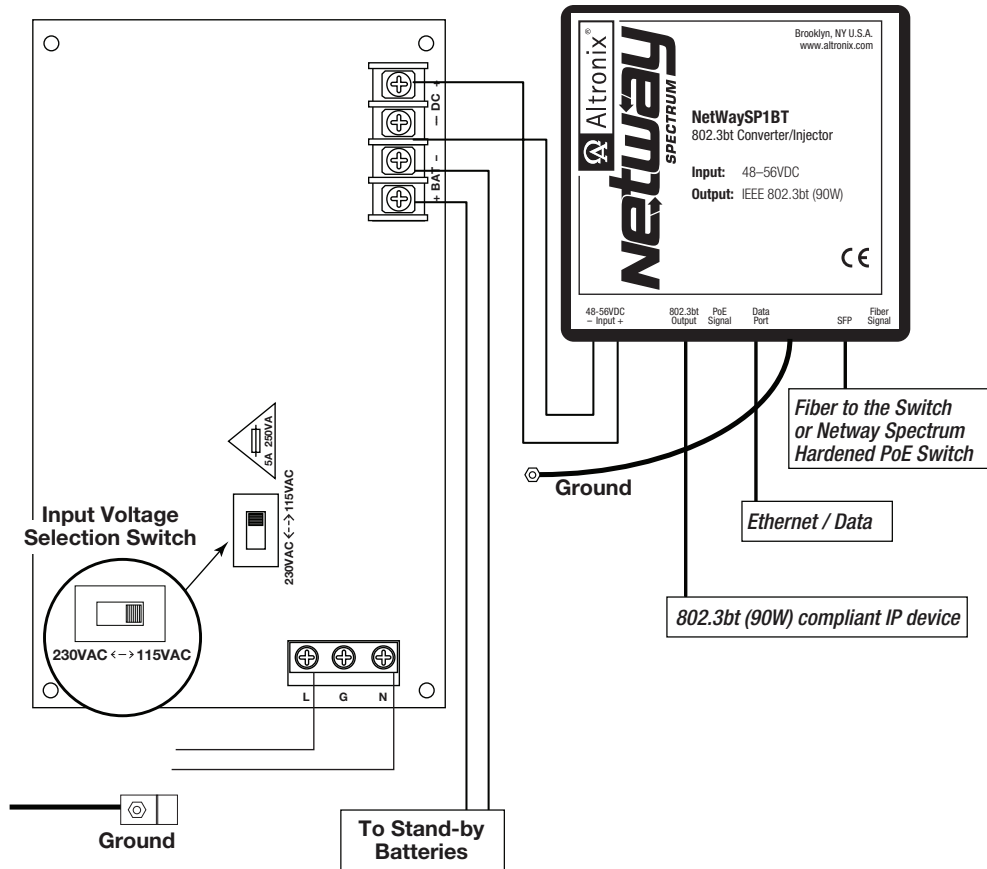
Operating Altitude: -304.8 to 2,000m

Similar products

NetWaySP1BTWPX	Outdoor 802.3bt media converter/injector with integral power in NEMA 4/4X IP66-11 enclosure which accommodates stand-by batteries.
NetWaySP1BT	802.3bt Media converter/injector in compact insulated housing
NetWaySP1BTWPN	802.3bt Media converter/injector in NEMA 4/4X IP66-11 enclosure

Lifetime Warranty

Typical Application

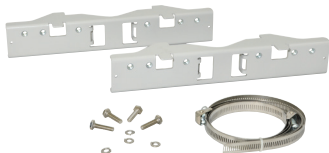


Accessories (order separately)



SFP Modules - Hot Pluggable Transceivers

- P1MM Multi-Mode SFP Module for distances up to 550m
- P1SM10 Single-Mode SFP Module for distances up to 10km
- P1AB2K Single Strand SFP Module for distances up to 2km
- P1GCE Copper SFP Module for distances up to 100m



PMK1 - Pole Mount Kit

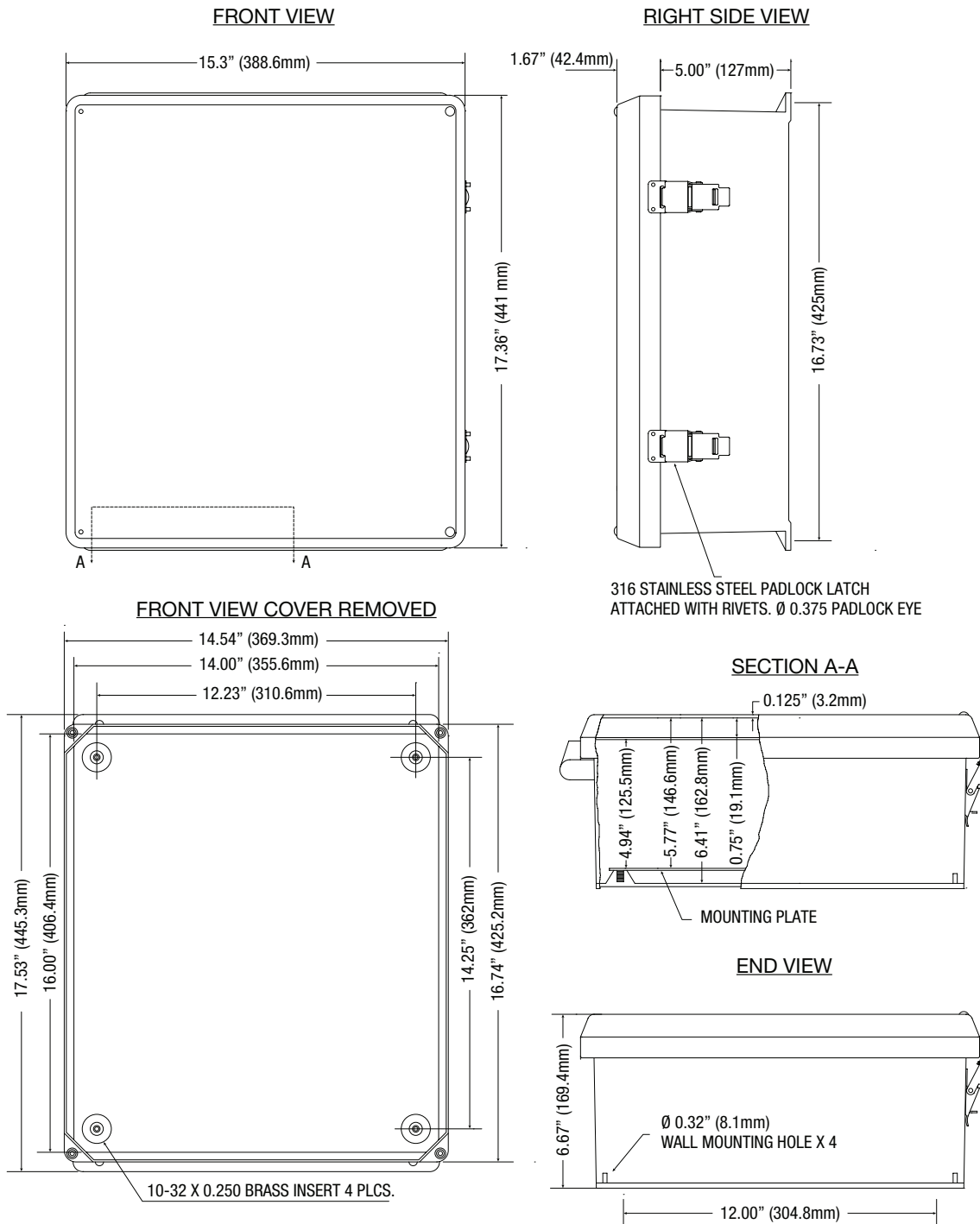
PMK1 pole mount kit is designed to simplify installation of outdoor units. It accommodates 2" - 8" (diameter) poles.

Lifetime Warranty

Dimensions and Drawing

Dimensions (H x W x D approximate)

17.53" x 15.3" x 6.67" (445.3mm x 388.6mm x 169.4mm)



Lifetime Warranty